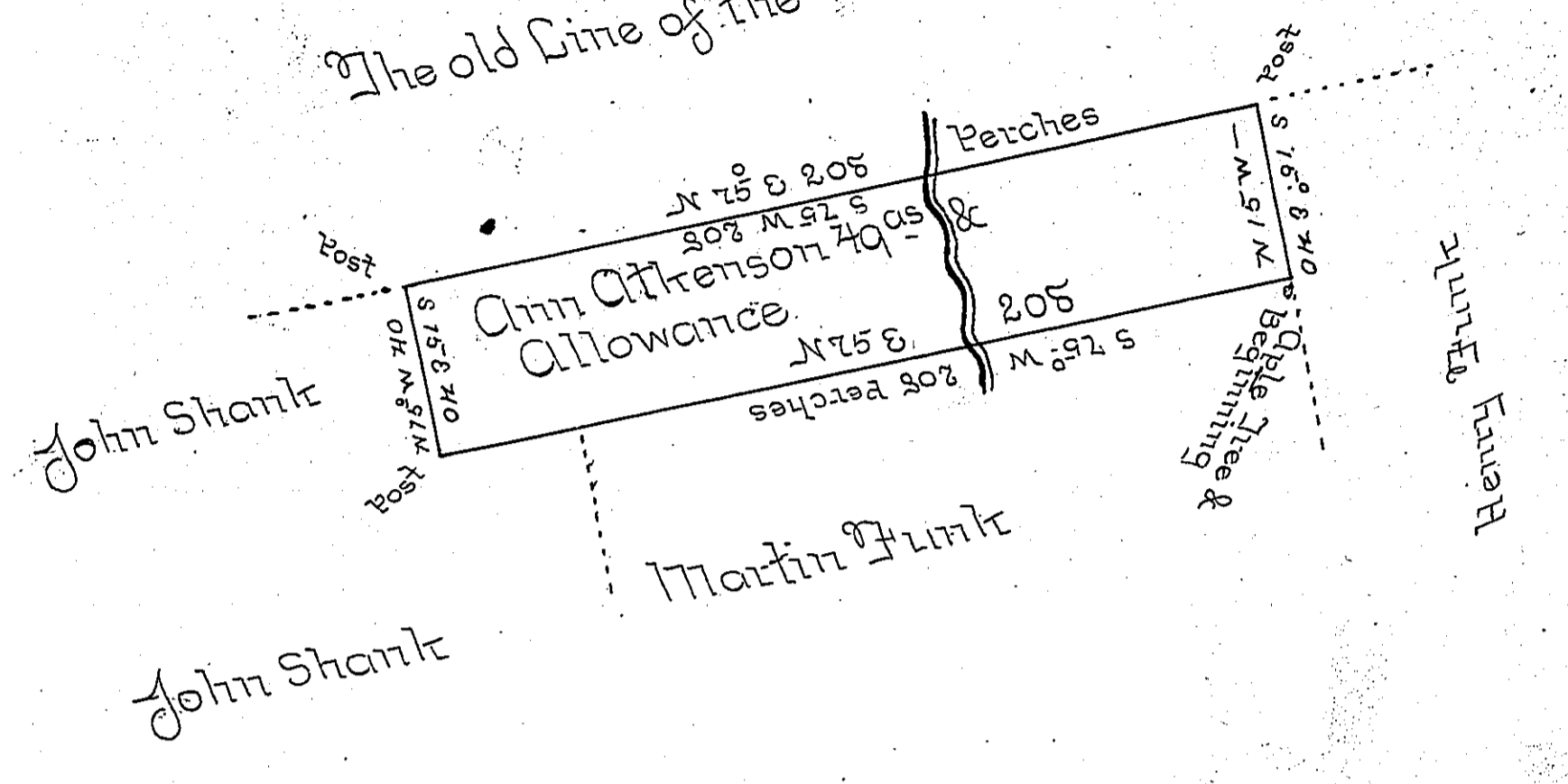


The old Line of the Manor



A Draught of a Tract of Land situate in Manor Township Lancaster County (Part of the Honourable the Proprietaries Manor of Conestoga) containing forty nine Acres and an Allowance proportional to six Acres Part for Roads and Highways it is Part of the North End of the Tract which is marked on the General Plan of the said Manor Andrew Coffman 480<sup>as</sup> said to have been survey'd by John Taylor for <sup>of Michael</sup> ~~Matthew~~ Atkinson the Tenant Right here of by the Will of the said <sup>Michael</sup> ~~Matthew~~ is now Vest ed in Ann xxx Atkinson his Widow for whom it was Surveyed the 23<sup>d</sup> day of January 1760

p Leo Stevenson

IN TESTIMONY that the above is a copy of the original remaining on file in the Department of Internal Affairs of Pennsylvania, made conformably to an Act of Assembly approved the 16th day of February, 1833, I have hereunto set my Hand and caused the Seal of said Department to be affixed at Harrisburg, this third day of April 1900.

*James W. Latta*  
Secretary of Internal Affairs.